

As exclusive agents, we are pleased to present:

117 Greenwich Avenue

Located between Jane & Horatio Streets



Approximate Size:
353 sq. ft. Ground Floor

Asking Rent:
Upon request

Possession:
Immediate

Comments:

- No cooking
- Close proximity to the 14th Street A,C,E,L, which boasts an annual ridership of 14,763,727
- One block from Jackson Square
- Previously Tibetan Handcrafts

Approximate Frontage:
11 feet

Neighboring Tenants:

- Otte • Equinox • Frederic Malle • Juice Press • Think Coffee
Tea & Sympathy • Dell'anima • Craft Atlantic • A Salt and Battery

Cory G. Zelnik
President & CEO
Cory@zelnikco.com

Jason Turner
Jason@zelnikco.com

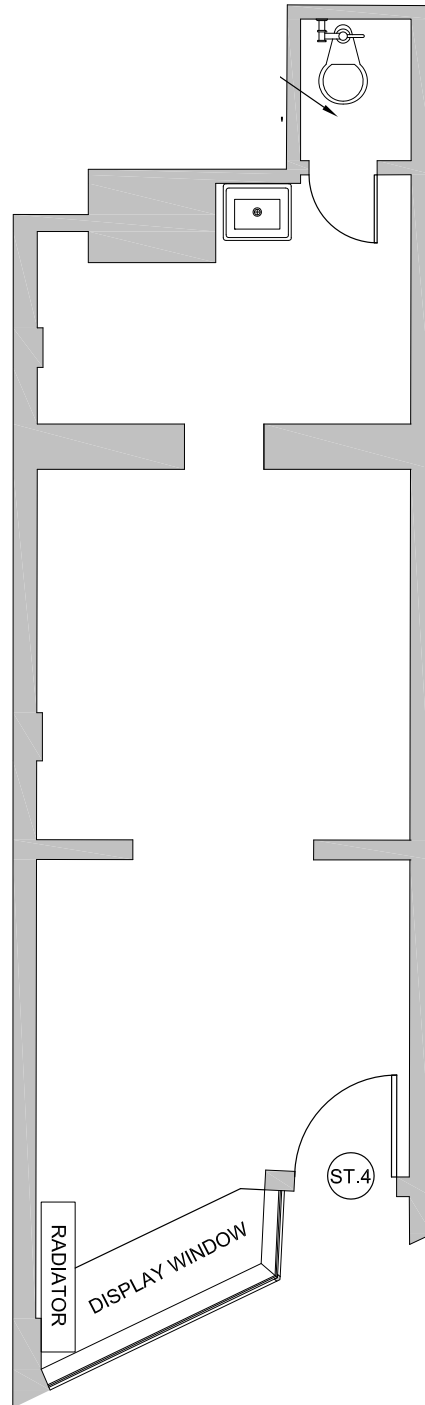
212.223.2200



As exclusive agents, we are pleased to present:

117 Greenwich Avenue

Located between Jane & Horatio Streets



Zelnik & Company LLC 424 Madison Avenue New York, NY 10017 212.223.2200 phone 212.223.0004 fax zelniko.com

The presentation of this property is submitted subject to errors, omissions, change of price or conditions prior to sale or lease. The information contained herein was obtained from sources believed to be reliable; however, Zelnik & Company LLC makes no guarantees, warranties, or representations as to the completeness or accuracy thereof.