

As exclusive agents, we are pleased to present:

# 225 Smith Street

Located at the Southeast corner of Butler Street



**Approximate Size:**

1,735 sq. ft. - Ground Fl.  
960 sq. ft. - Cellar  
360 sq. ft. - Mezzanine

**Possession:**

Arranged

**Approximate Frontage:**

30' of wrap-around

**Asking Rent:**

Upon request

**Comments:**

- Two blocks from the Bergen St (F,G) subway lines with 3,711,317 annual riders
- Crossroads of Cobble Hill, Boerum Hill & Carrol Gardens
- Excellent visibility
- Currently WP Store

**Neighboring Tenants:**

Bird • Epaulet • American Apparel • Soula Shoes • B'tween  
Anne & Valentin • Lululemon Athletica • Chase • Rite Aid

Jason Turner  
jason@zelnikco.com

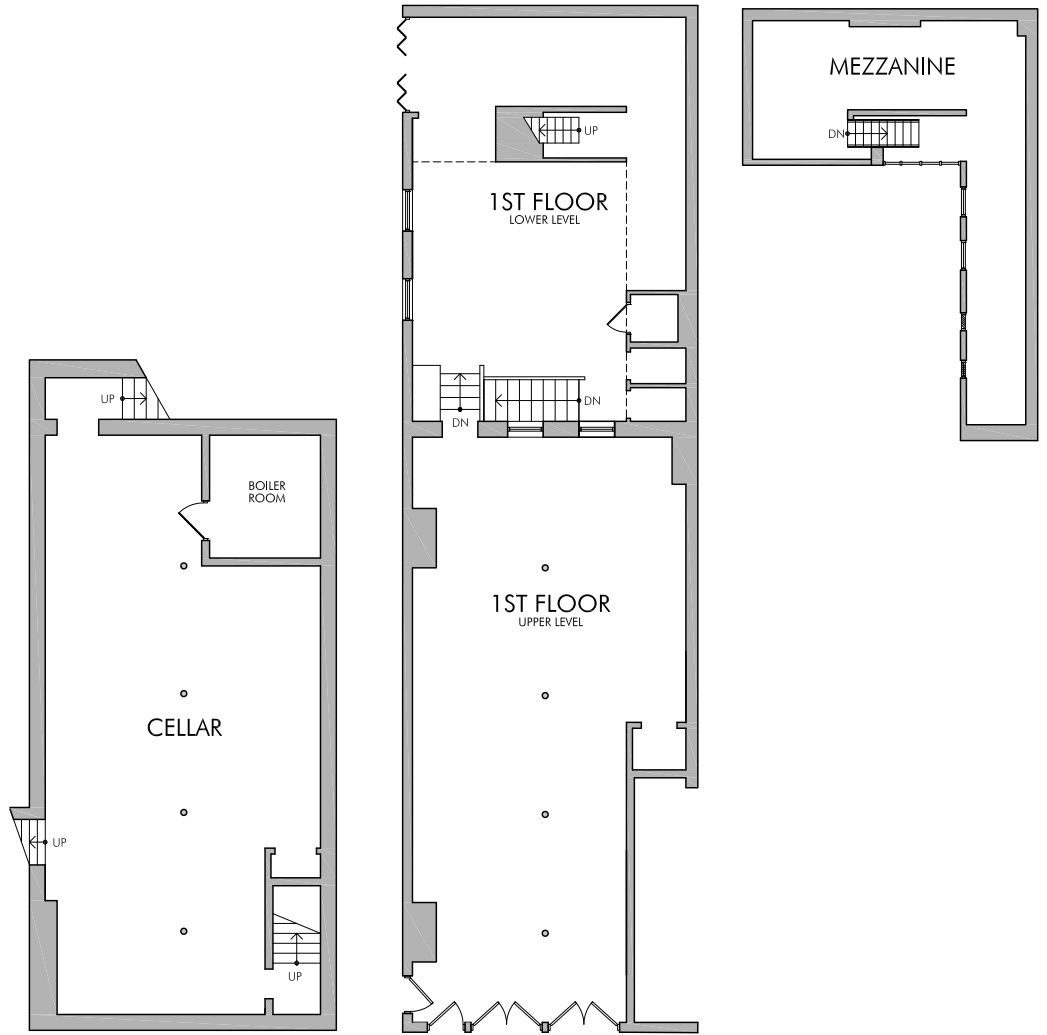
212.223.2200



As exclusive agents, we are pleased to present:

# 225 Smith Street

Located at the Southeast corner of Butler Street



Zelnik & Company LLC 424 Madison Avenue New York, NY 10017 212.223.2200 phone 212.223.0004 fax zelnikco.com

The presentation of this property is submitted subject to errors, omissions, change of price or conditions prior to sale or lease. The information contained herein was obtained from sources believed to be reliable; however, Zelnik & Company LLC makes no guarantees, warranties, or representations as to the completeness or accuracy thereof.