

As exclusive agents, we are pleased to present:

89-36 165th Street

Between Jamaica Avenue & 89th Avenue



Approximate Size:

2,447 sq. ft. - Ground Fl.
2,705 sq. ft. - Basement

Asking Rent:

Upon request

Possession:

Arranged

Comments:

- Part of the 165th Street Mall
- Next to the Jamaica Colosseum Mall
- Across the street from the Jamaica Bus Terminal
- Close proximity to mass transportation
- Dense residential population
- Heavy foot traffic

Approximate Frontage:

21'6"

Neighboring Tenants:

- Jimmy Jazz • Footlocker • Pretty Girl • AT&T • VIM • Bank of America
Zales • Dr Jays • Sprint • Boost Mobile • The Home Depot

Cory G. Zelnik
President & CEO
cory@zelnikco.com

Sean Philipps
sean@zelnikco.com

212.223.2200

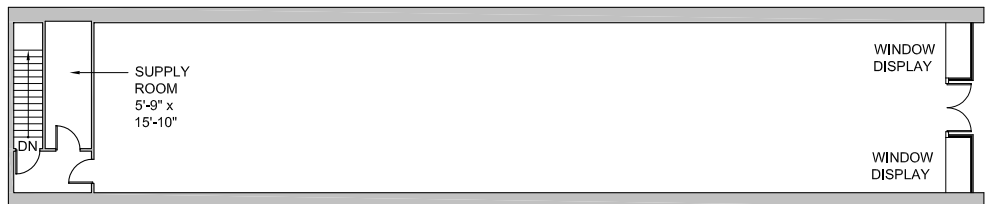


As exclusive agents, we are pleased to present:

89-36 165th Street

Between Jamaica Avenue & 89th Avenue

GROUND FLOOR



BASEMENT

